

# Installing 2X ThinClientServer on Windows

---

## System Requirements

Before you install 2X ThinClientServer, please ensure that you meet all the following requirements

- Windows 2000/2003 server or Windows 2000/XP.
- 256 MB of RAM or more
- 800 MHz processor or higher

---

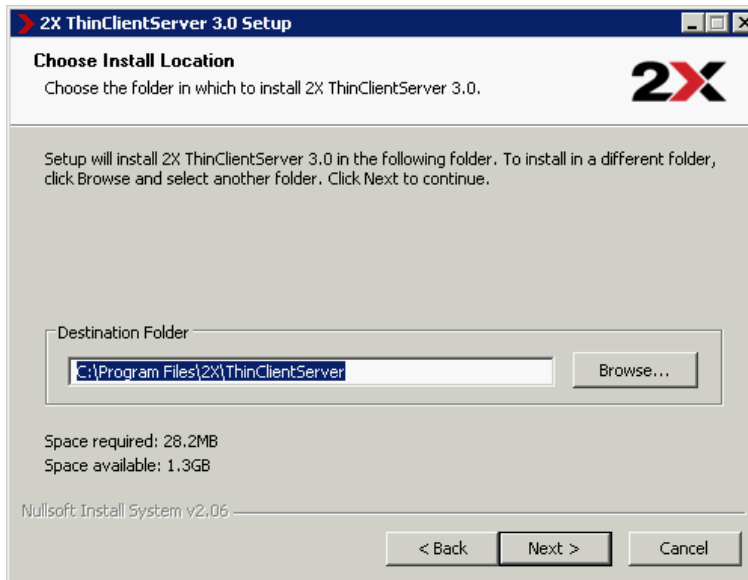
## Step 1: Run set-up

1. Run set-up by double-clicking on the file 2XTCS2SETUP.EXE.



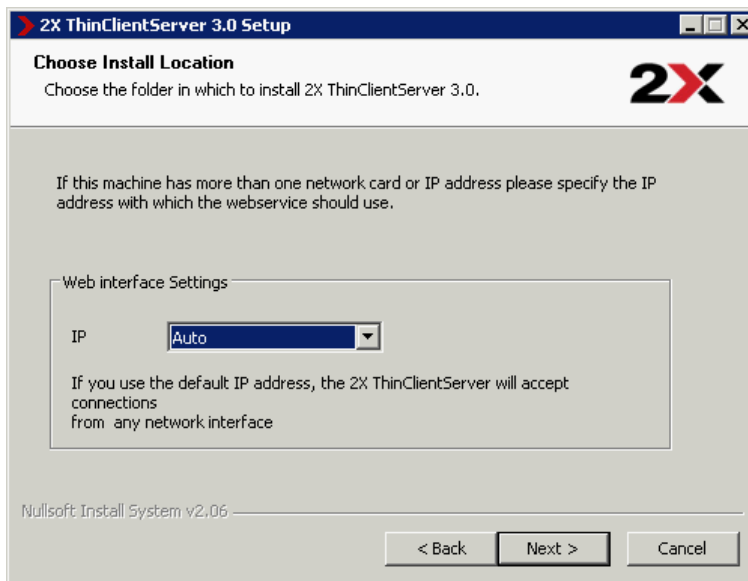
*Screenshot 1: 2X ThinClientServer setup wizard*

2. Click Next to start installation.
3. In the License agreement dialog box, review the license agreement and click Yes to continue the installation.



*Screenshot 2: Choosing the installation folder*

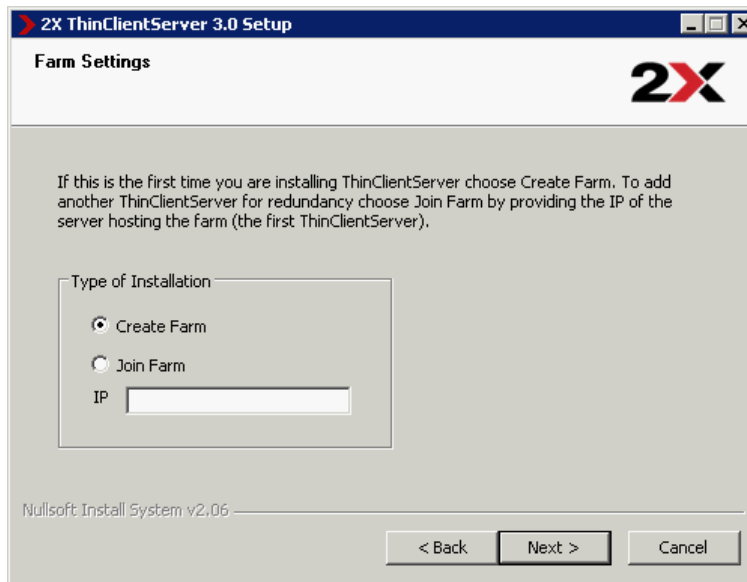
4. Choose the destination location for 2X ThinClientServer and click **Next**. 2X ThinClientServer will need a minimum of approximately 50 MB of free hard disk space.



*Screenshot 3: Choosing the IP addresses for the service to listen on*

5. If you have multiple network cards, or multiple IP addresses on one network card, setup will ask you for the IP address to which the 2X ThinClientServer must bind. Select Auto unless you want

to exclude a particular network card.

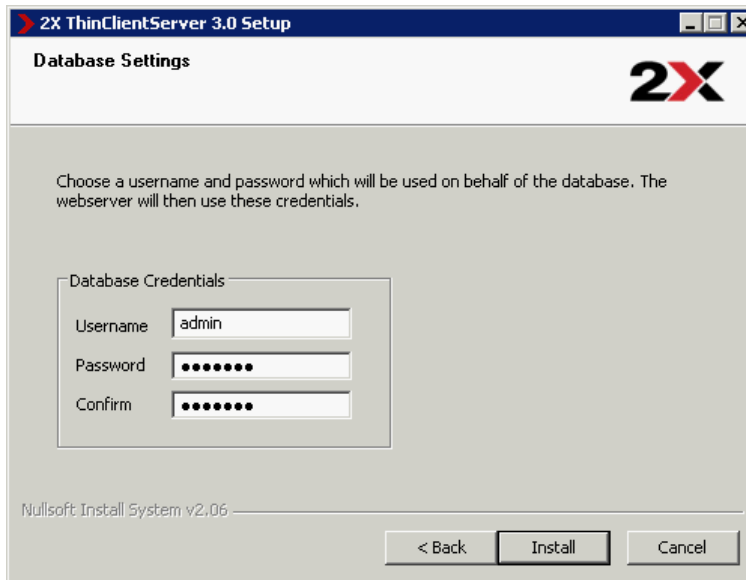


*Screenshot 4: Choose Server configuration in a Farm scenario*

6. Set-up will ask you whether you want to create a 2X ThinClientServer farm or join an existing farm. If this is the first time you are installing 2X ThinClientServer, choose “Create Farm”. If you want to add a 2X ThinClientServer to an existing installation to improve the deployment of thin clients in large installations, then choose “Join Farm” and enter the IP address of the 2X ThinClientServer hosting the farm (typically the first 2X ThinClientServer).

***Firewall Issues:***

*Please note that for a member server to join a farm successfully, it will be necessary to ensure that TCP connections on port 3306 to the 2X ThinClientServer hosting the farm can be established.*

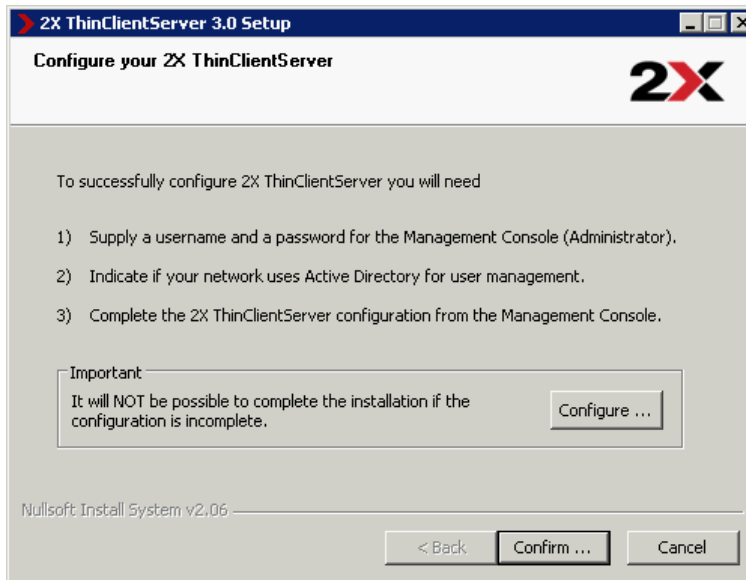


Screenshot 5: Setting the database credentials

7. Setup will ask you for a username and password for the settings to connect to the 2X ThinClientServer database. Click Install to start the installation.
8. Setup will now copy all files and install the necessary services. Setup will have installed the following new services:
  - 2X ThinClientServer Management Console (web-based)
  - 2X TFTPd
  - 2X DHCP Helper
  - MySQL

**Windows XP Service Pack 2:**

*Please note that Windows XP Service Pack 2 has the Windows Firewall enabled by default, and the first time a Web Server is installed (such as 2X ThinClientServer Management Console), will request the user to confirm whether to continue blocking "Apache HTTP Server". It will be necessary to click the "Unblock" button on this dialog for the Management Console to function correctly.*

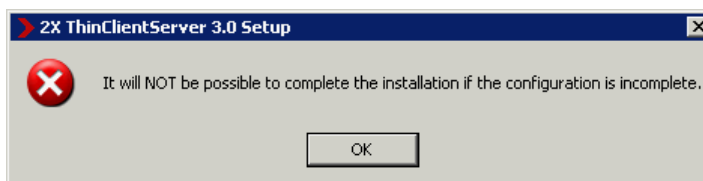


Screenshot 6: Waiting for the user to complete configuration ...

9. You must now connect to the 2X ThinClientServer Management Console by selecting the “Configure ...” button to configure the initial parameters for 2X ThinClientServer. Please refer to Chapter 5 for detailed initial configuration information.

*You may launch the Management Console at any time for further configuration by starting a web browser and enter the name of the machine on which 2X ThinClientServer is installed on port 980. (For example: <http://thinserver.2x.com:980>)*

10. Once the initial configuration is complete, return to the 2X ThinClientServer Setup program and click the “Confirm ...” button.



Screenshot 7: Wizard detects an incomplete setup

11. If the initial configuration is NOT complete, the 2X ThinClientServer Setup program will report an error. Click “OK” to acknowledge the error message and select the “Configure ...” button to launch the Management Console. Refer to Chapter 5 for detailed initial configuration information.



*Screenshot 8: Completing the 2X ThinClientServer Installation procedure.*

12. Click the "Finish" button. Initial configuration was complete and the installation procedure was completed successfully.