



Fault tolerant & secure **Terminal Servers**, stress free

...With **2X LoadBalancer**
For Terminal Services/Citrix

Load balancing, increased security and redundancy for your Terminal Services

Since Microsoft Terminal Services Servers support many users, it's important to ensure that each Terminal Server is fully redundant and that the load is distributed between servers ensuring optimal service quality for users.

2X LoadBalancer for Terminal Services / Citrix allows you to easily load balance RDP/ICA sessions between Terminal Servers and provide fault tolerance. In addition, if you are allowing users to login from the internet, you can hide the backend terminal services from the internet and just expose one single gateway machine - thereby drastically increasing security of your Terminal Servers.

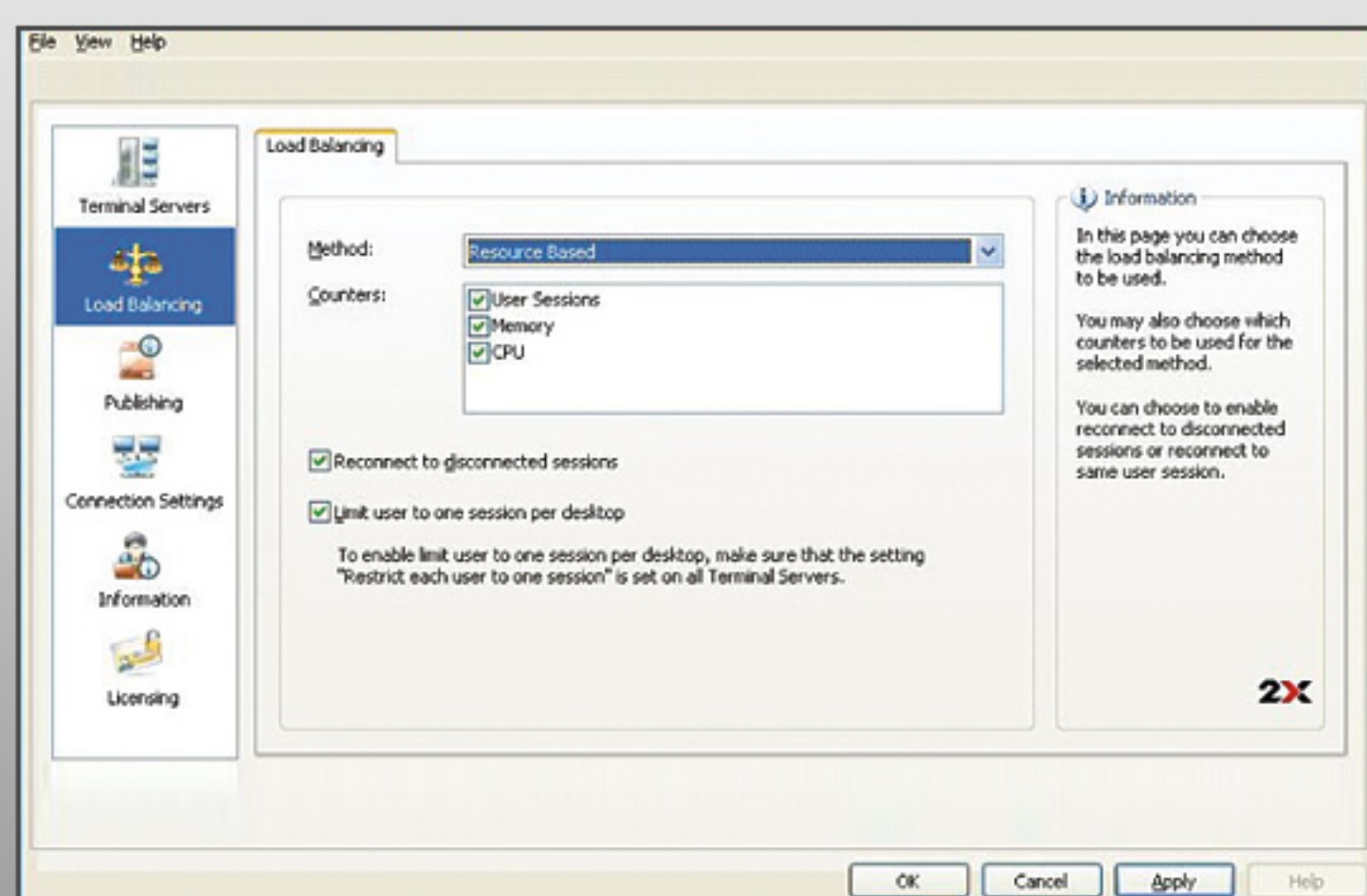
Reconnect user sessions

With 2X LoadBalancer, users can be reconnected to their disconnected sessions easily. No need to setup the complex session directory.

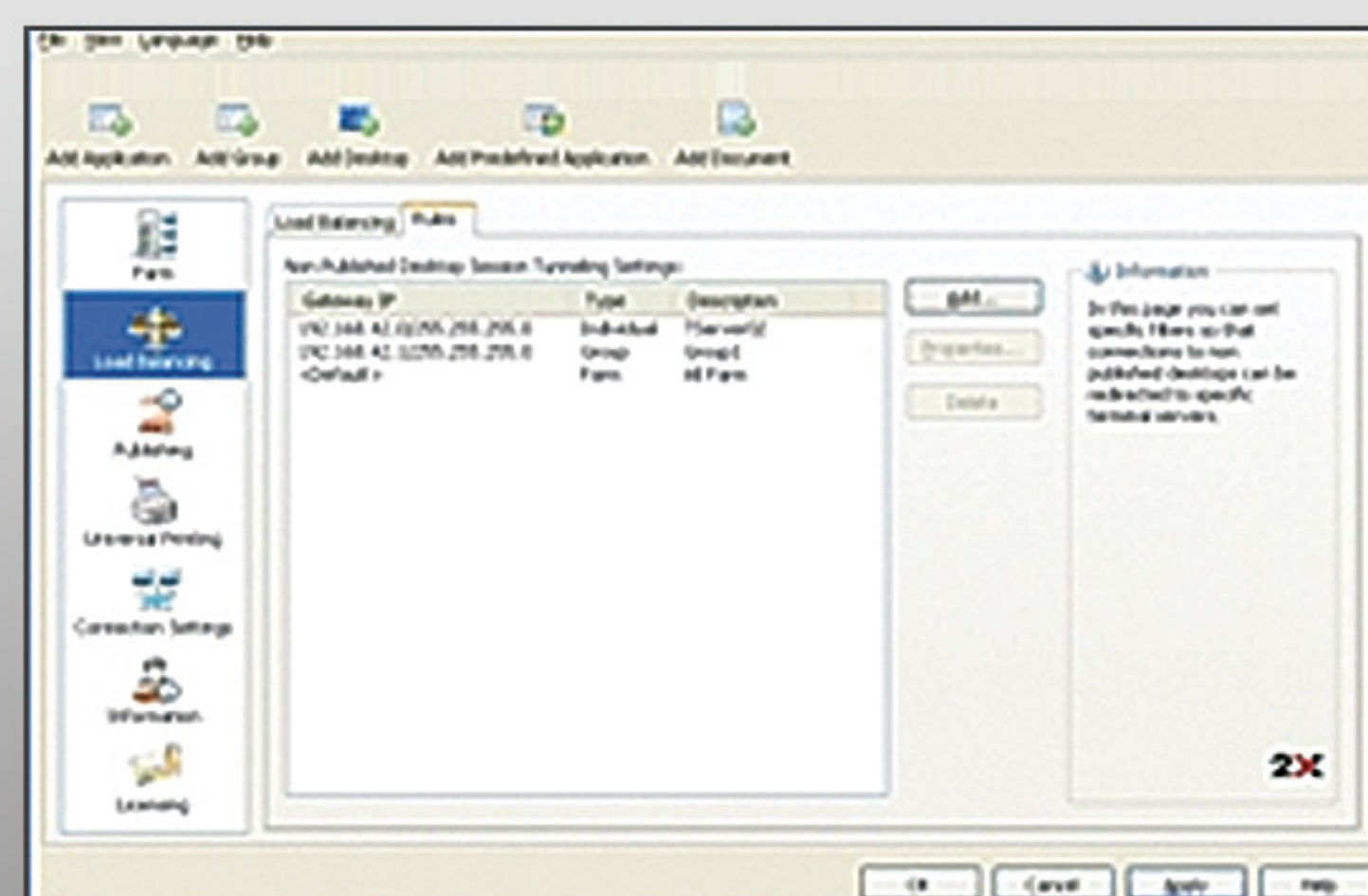
2X LoadBalancer features:

- ❖ Resource-based load balancing
- ❖ Ensures redundancy of Terminal Servers
- ❖ Reconnects users to disconnected sessions
- ❖ Reconnects users to active sessions
- ❖ Integration with 2X ApplicationServer
- ❖ Firewall friendly, end to end SSL encryption
- ❖ Supports Microsoft Terminal Services and Citrix

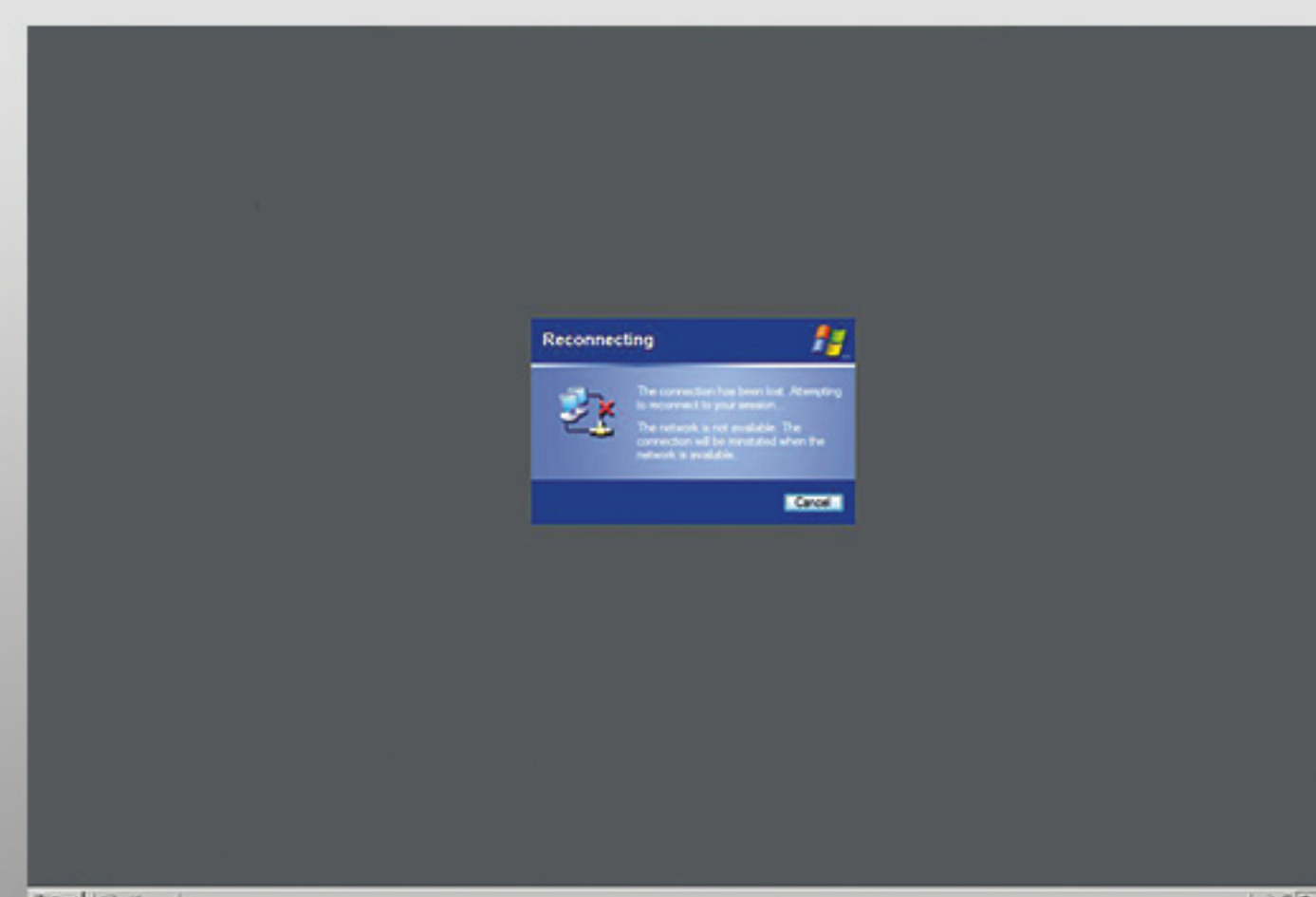
2X LoadBalancer Screen shots:



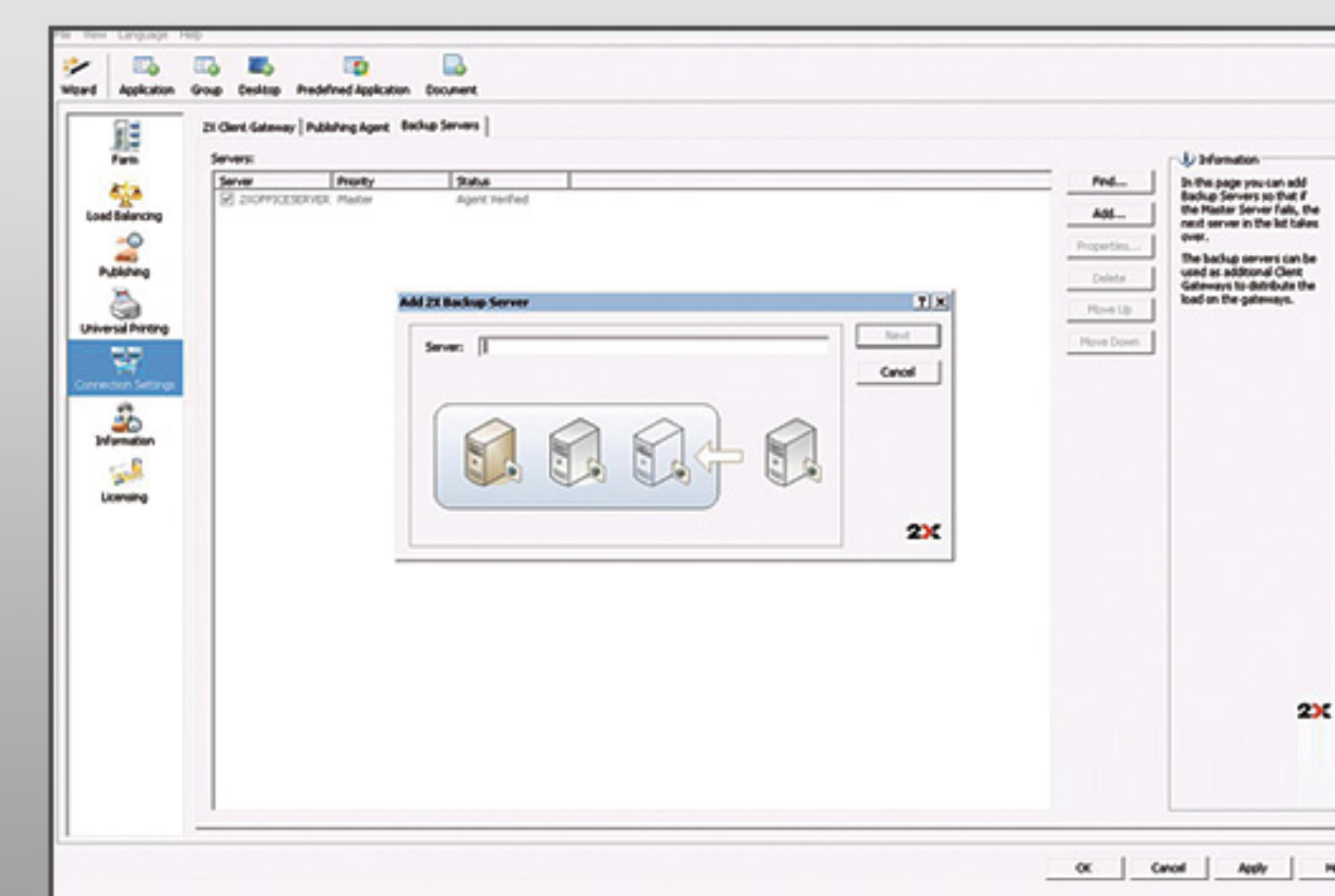
Resource-based load balancing



Supports Microsoft Terminal Services and Citrix servers



Reconnects users to disconnected sessions



Ensures redundancy of Terminal Servers

... Go thin and win with **2X**

2X Software, Americas
1825 W Walnut Hill Lane
Irving, Texas 75038
USA

Tel: (+1) 866-970-6262
Fax: (+1) 866-970-6464

Support: support.us@2x.com
Sales: sales.us@2x.com
Website: www.2x.com

